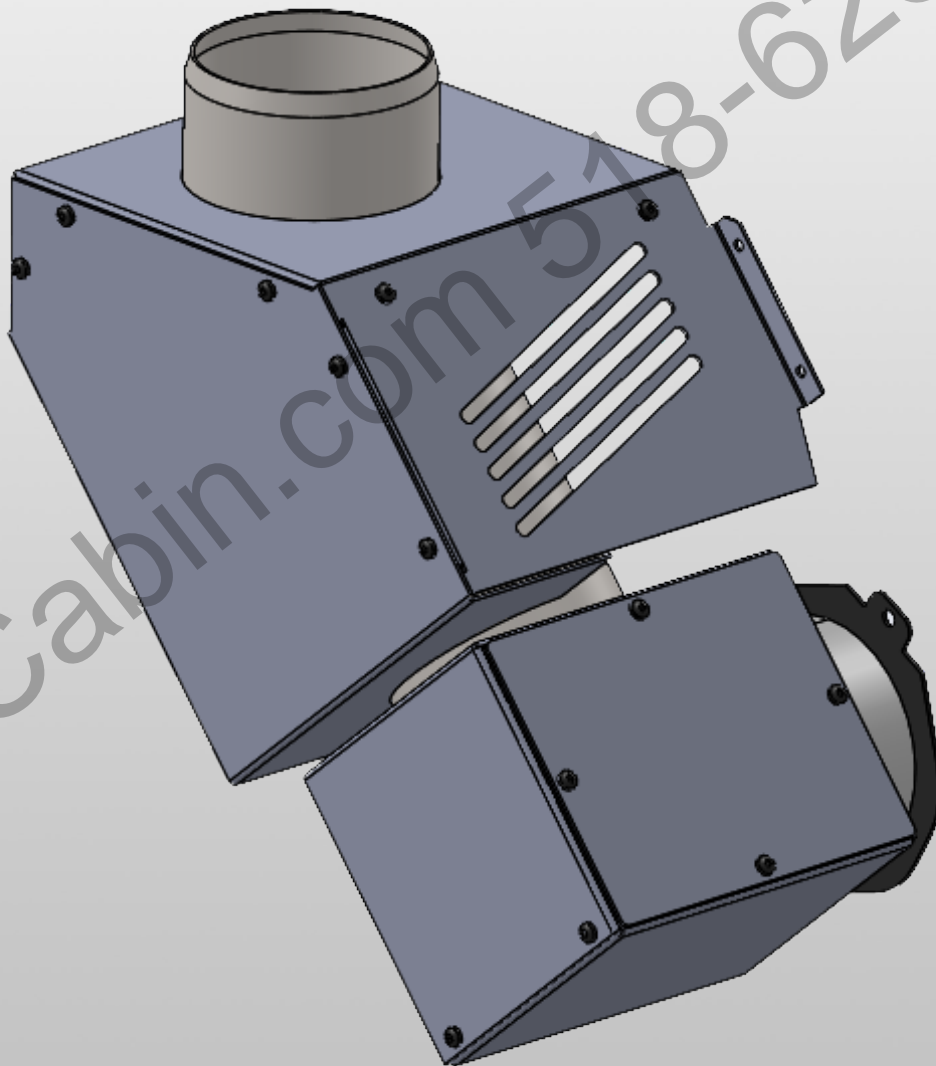




M55FS-2/M55C-FS-2

Top Vent Adapter (50-4160)

Installation Manual



INSTALLED DIMENSIONS - M55FS-2

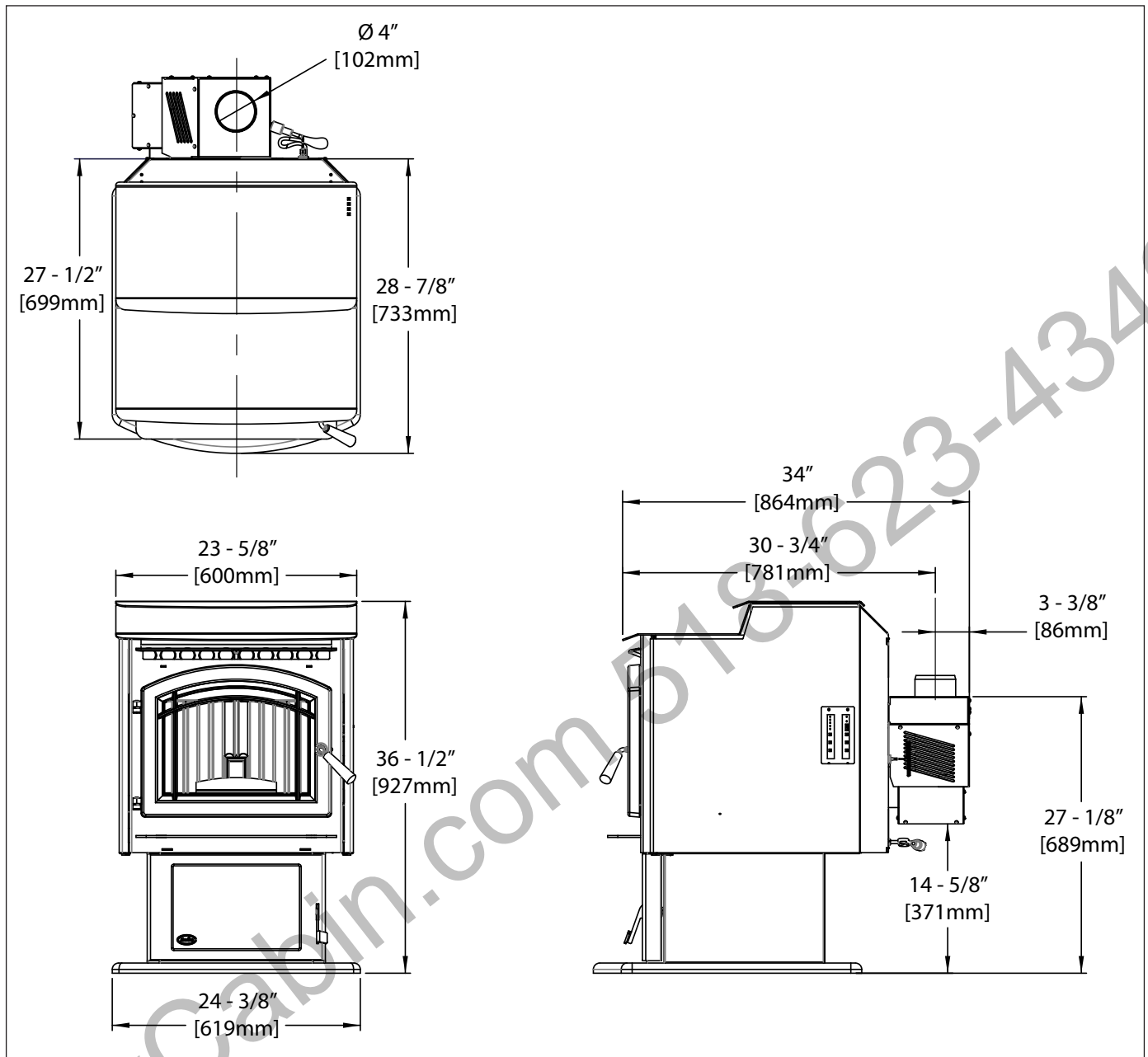


Figure 1: Installed Dimensions - M55FS-2

INSTALLED DIMENSIONS - M55C-FS-2

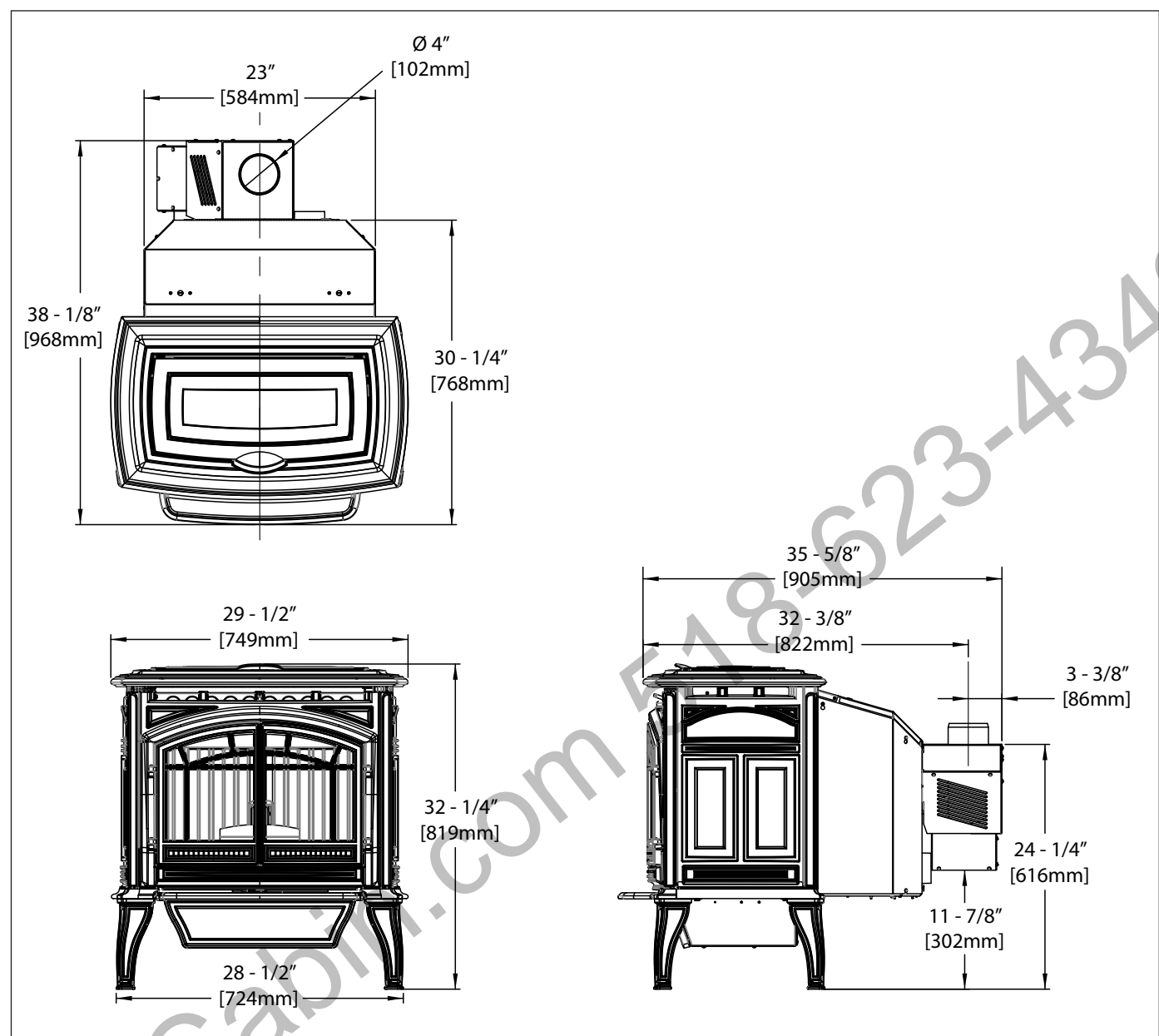


Figure 2: Installed Dimensions - M55C-FS-2

CLEARANCE TO COMBUSTIBLES

These dimensions are minimum clearances but it is recommended that you ensure sufficient room for servicing, routine cleaning, and maintenance.

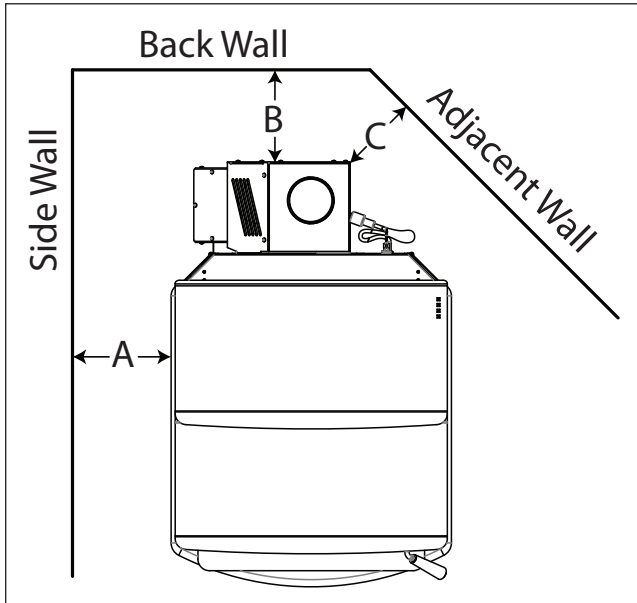


Figure 3: Clearance to Combustibles - M55

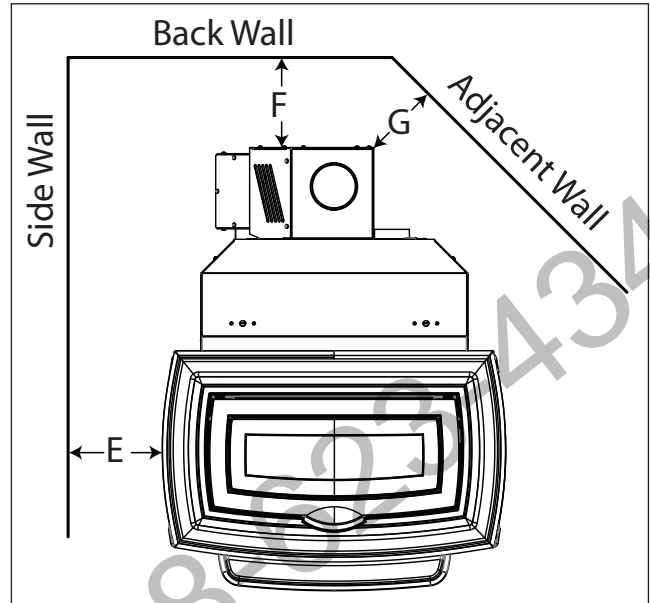


Figure 4: Clearance to Combustibles - M55C

M55FS-2

- A.** Side Wall to Unit: 12 inches [30.5cm]
- B.** Back Wall to Unit: 3 inches [7.6 cm]
- C.** Adjacent Wall to Unit: 3 inches [7.6 cm]
- D.** Ceiling Height: 60 inches [152 cm]

M55C-FS-2

- E.** Side Wall to Unit: 9 inches [22.9cm]
- F.** Back Wall to Unit: 3 inches [7.6 cm]
- G.** Adjacent Wall to Unit: 3 inches [7.6 cm]
- H.** Ceiling Height: 60 inches [152 cm]

Both units must be installed with a minimum of 6" (152 mm) of floor protection in front of and to the sides of the door opening.

INSTALLATION INSTRUCTIONS

1. Remove the bolt securing the exhaust starter to the unit found at the rear of the unit (see Figure 5). Ensure the gasket stays in place and is not removed. If the gasket is damaged, a replacement is included with the Top Vent Adapter.
2. Place the exhaust adapter into the same space that the exhaust starter was just removed (see Figure 6). Make sure the exhaust flange is securely placed within the two tabs and attach using the bolt removed in the previous step.
3. Attach the body of the adapter to the rear of the hopper using six (6) #8 Tek screws as shown in Figure 7.
4. Fully tighten the four bolts on the exhaust adapter.

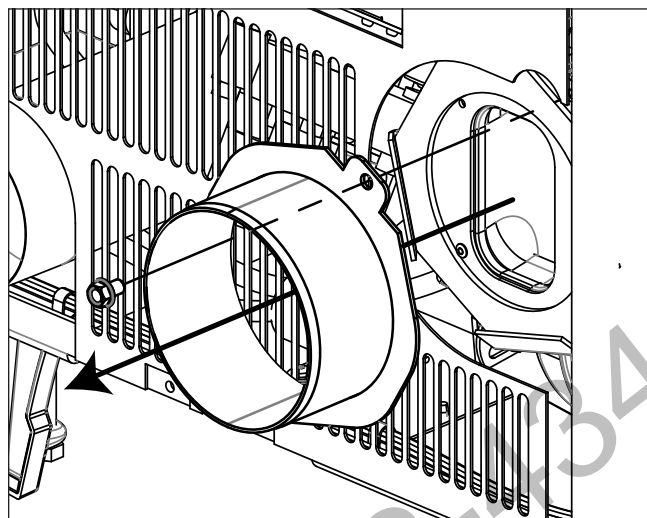


Figure 5: Exhaust Starter Removal

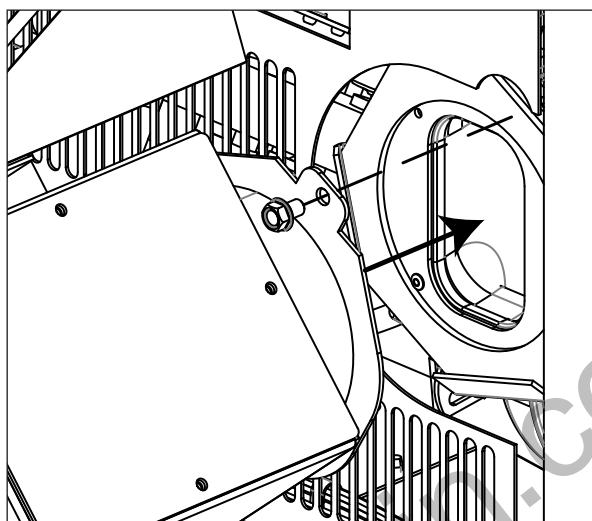


Figure 6: Exhaust Starter Attachment

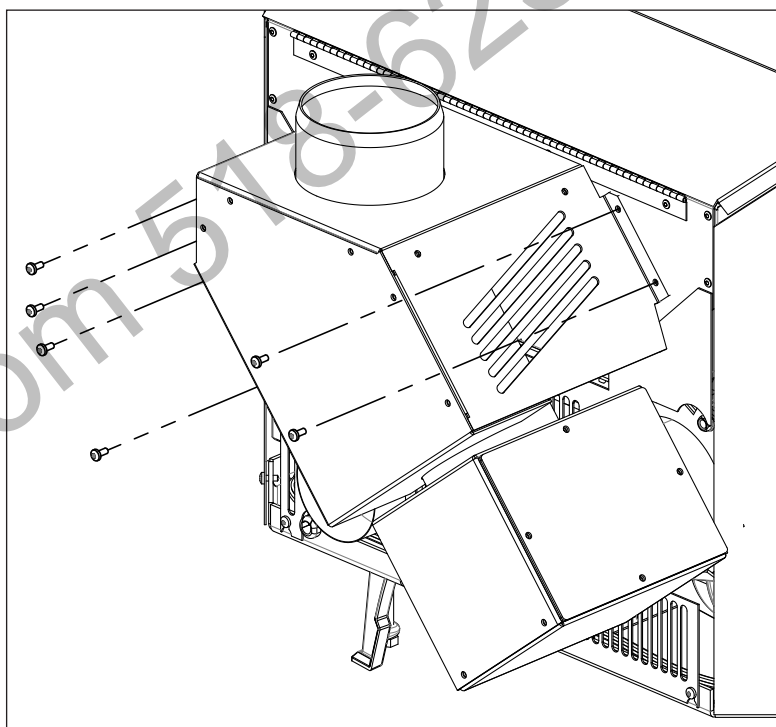


Figure 7: Top Vent Adapter Attachment

VERTICAL INSTALLATION - M55FS-2/M55C-FS-2

***NOTE:** The 4" pipe adapter, 4" pipe lengths, 4"-6" increaser, DVL adapter, and new/existing Class A chimney are to be used with Simpson Duravent components

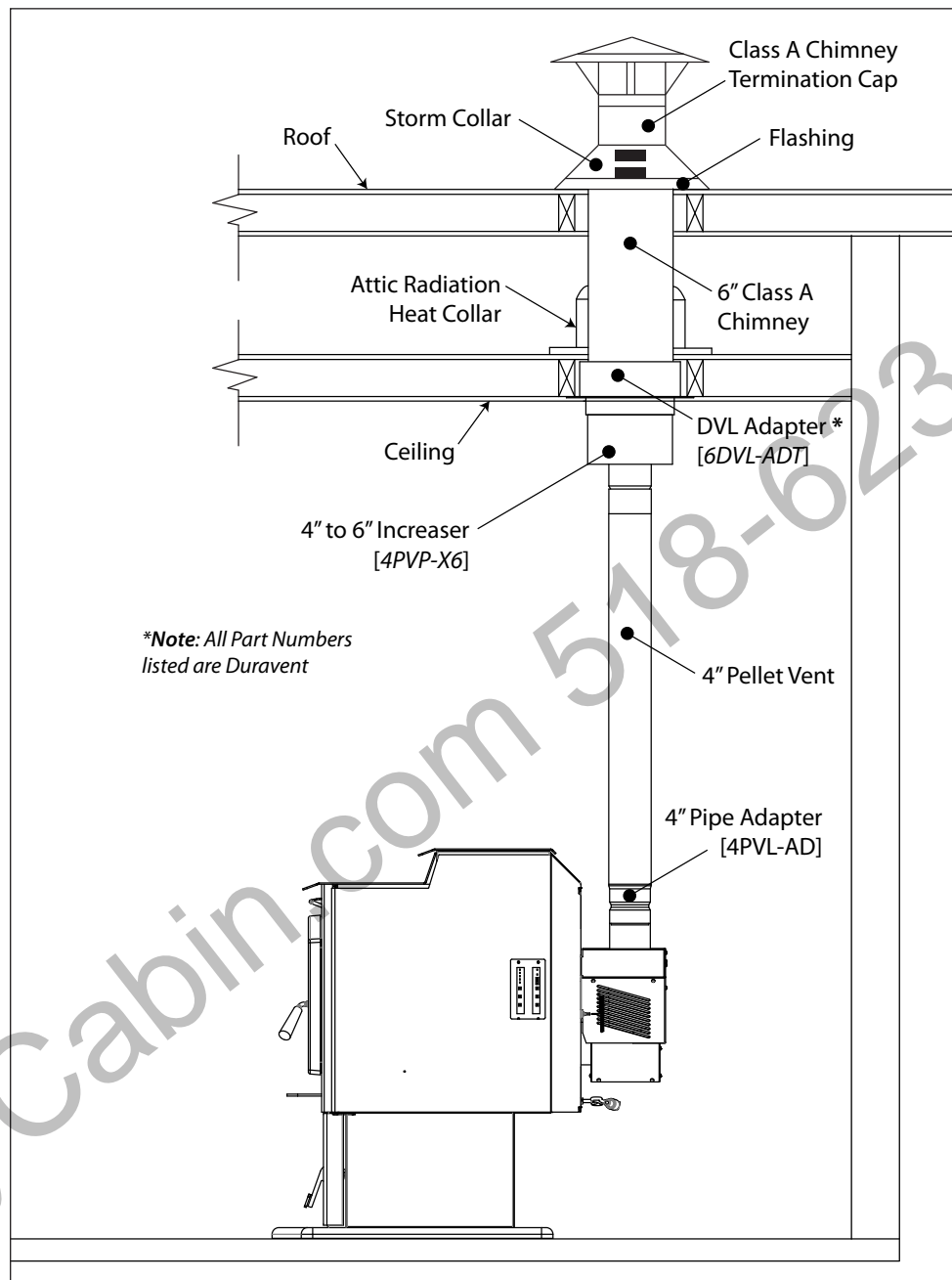


Figure 8: Freestanding Vertical Installation

Refer to Simpson Duravent Typical Venting Installation catalogue to select the appropriate component parts required for your installation.

(*): Not required with DuraTech Premium or DuraTech Canada. DTC ceiling supports feature a built-in flue extension which eliminates the need for this adapter.

THRU-THE-WALL INSTALLATION - M55FS-2/M55C-FS-2

***NOTE:** The 4" pipe adapter, 4" pipe lengths, 4"-6" increaser, DVL adapter, and new/existing Class A chimney are to be used with Simpson Duravent components

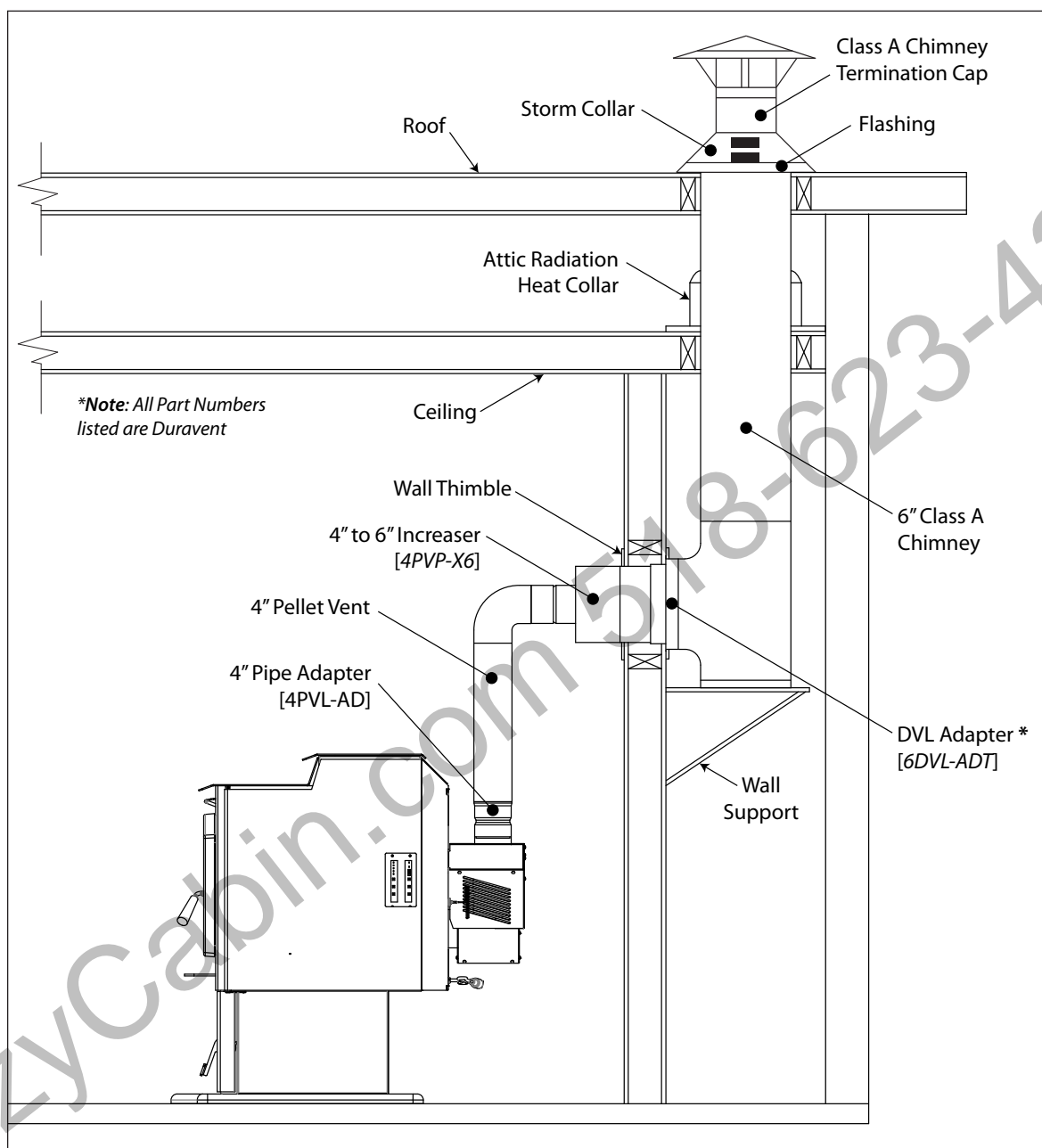


Figure 9: Freestanding Thru-The-Wall Installation

Refer to Simpson Duravent Typical Venting Installation catalogue to select the appropriate component parts required for your installation.

(*): Not required with DuraTech Premium or DuraTech Canada. DTC ceiling supports feature a built-in flue extension which eliminates the need for this adapter.

CLEANING/SERVICING

The Top Vent Adapter has a removable cover plate on the side of its exhaust box as shown in Figure 10. Remove this plate to access the inside of the exhaust box for cleaning/servicing.

When reinstalling the cover plate, ensure the exhaust box gasket is properly seated between the plate and the exhaust box.

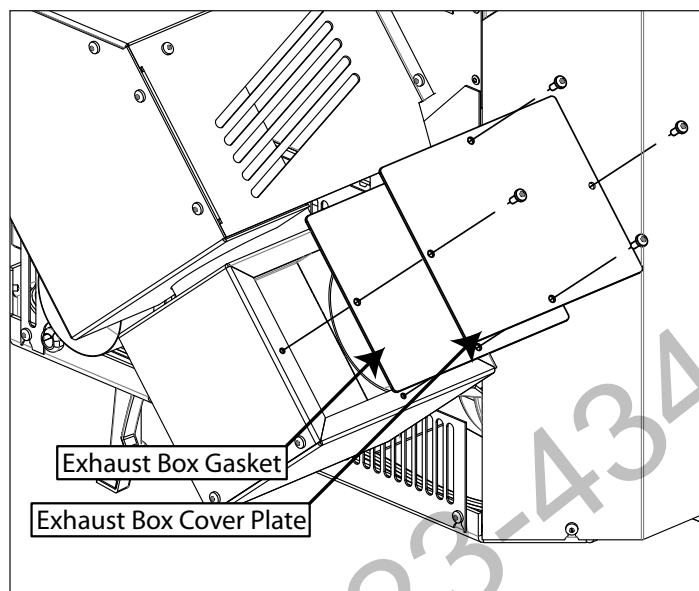


Figure 10: Exhaust Box Servicing

CozyCabin.com 518-623-4349

MANUFACTURED BY:
SHERWOOD INDUSTRIES LTD.
6782 OLDFIELD RD. SAANICHTON, BC, CANADA V8M 2A3
www.enviro.com
Summer 2022
C-16634