



## Model: 1322WT

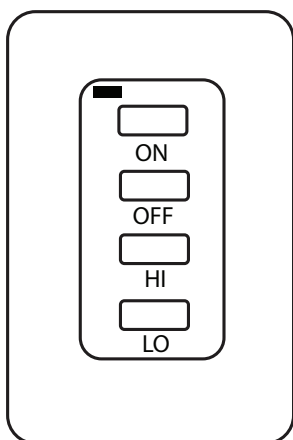
### OPERATING AND INSTALLATION INSTRUCTIONS

**IF YOU CANNOT READ OR UNDERSTAND THESE INSTALLATION INSTRUCTIONS DO NOT  
ATTEMPT TO OPERATE**

#### INTRODUCTION

This transmitter operating range is approximately 20-feet. The transmitter operates on one of 65,536 security codes that are programmed into the transmitter at the factory; this transmitter operates on radio frequencies with non-directional signals. The receiver for this transmitter is built into the AF-4000MOD-1 module.

#### **TRANSMITTER**



The transmitter operates with (2) 3-volt button cell batteries made specifically for remote controls and electronic lighters. Install the batteries supplied with the 1322WT as described below.

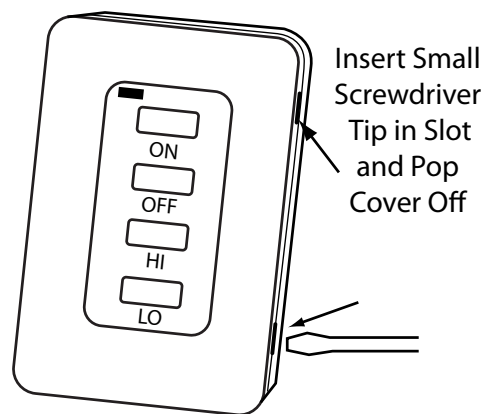
It is recommended that AKALINE batteries always be used for longer battery life and maximum operational performance.

The transmitter has ON/OFF and Hi/Lo, functions that are activated by pressing any button on the face of the transmitter. When a button on the transmitter is pressed, a signal light on the transmitter illuminates briefly to verify that a signal has been sent. Upon initial use, there may be a delay of three seconds before the remote receiver will respond to the transmitter. This is part of the system's design. If the signal light does not illuminate, check the position of the transmitter's battery.

**Fig. 1** 1322WT Transmitter

#### TO INSTALL BATTERIES IN WALL MOUNT TRANSMITTER

1. Remove face from backing plate by inserting a small screwdriver into the small slot at the top or bottom of the faceplate as shown then snap OFF (See figure 2).
2. Locate the two holders (metal tabs) for the 3V button cell batteries.
3. Place the button cell batteries into the battery holders under the metal tabs and snap into place. (Ensure the batteries are installed with the (+) plus side out as shown in figure 3 on page 2.)
4. After the batteries are installed replace the faceplate on the base.



**Fig. 2.** Removing Front Cover

## TO REMOVE THE BATTERIES IN WALL MOUNT TRANSMITTER

1. Remove face from backing plate by inserting a small screwdriver into the small slot on the side at the top or bottom of the faceplate as shown then snap OFF (See figure 2).
2. Locate the (2) holders for the 3V button cell batteries.
3. Insert a small screwdriver into the slot at bottom of the button cell battery area and pop battery out.
4. After the batteries are installed replace the faceplate.

## WALL MOUNTING THE TIMER

1. The 1322WT must be located within 20-feet of the module.
2. Remove the faceplate as shown in figure 2, page 1.
3. Locate the two mounting holes and mark the wall.
4. Use the (2) two dry wall anchors and screws (supplied) to mount the base plate on the wall or mounted onto an existing plastic electrical box. See figure 3 base plate holes centered at top and bottom of transmitter.
5. Mount plate should be mounted level for best operation.

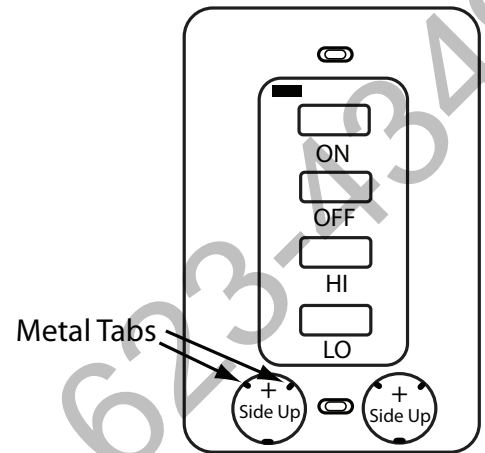


Fig. 3 Battery Installation

## LEARNING TRANSMITTER TO MODULE

Each transmitter can use one of 65,536 unique security codes. It will be necessary to program the AF-4000MOD-1 to "LEARN" the security code of the transmitter upon initial use. When matching security codes, be sure the slide button on the AF-4000MOD-1 is in the REMOTE position; the code will NOT "LEARN" if the slide switch is in the REMOTE position. To learn the security code from the transmitter to the AF-4000MOD-1 module just press and release the learn button (See fig. 4). The module will "beep" one time. After the initial beep press any button on the 1322WT transmitter. The module will beep multiple times indicating the security code has been successfully programmed.

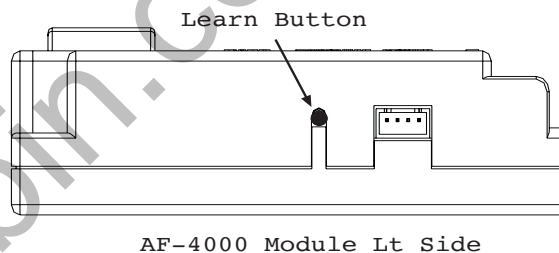


Fig. 4 Module Learn Button

## HI/LO FLAME OPERATION (HI/LO Solenoid)

After pressing the ON button and the appliance in the ON position:

1. Press and release the **LO** button on the transmitter the appliance flame will go the low setting.
2. Press and release the **HI** button on the transmitter the appliance flame will go the high setting.

## HI/LO FLAME OPERATION (HI/LO DC Motor Drive)

After pressing the ON button and the appliance in the ON position:

1. Press and hold the **LO** button on the transmitter release the button at the desired flame height or hold until the DC motor drive reaches the lowest flame height setting.
2. Press and hold the **HI** button on the transmitter release the button at the desired flame height or hold until the DC motor drive reaches the highest flame height setting.

**Note: On front of the AF-4000BP there is a slide switch to change operation from Latching Hi/Lo Solenoid to operating the DC Motor Drive. Ensure the switch is in the correct location for your product.**

### **CONTINUOUS PILOT FEATURE**

If your system has a standing or continuous pilot (if applicable) you can change the Continuous Pilot switch to ON with the AF-4000MOD-1 module can also turn on this Continuous pilot feature.

### **BATTERY LIFE**

Life expectancy of alkaline batteries in the 1322WT should be at least 12 months. Check and replace transmitter battery annually. When the transmitter no longer operates the remote receiver from a distance it did previously (i.e., the transmitter's range has decreased) or the remote receiver does not function the transmitter batteries should be checked. The transmitter should operate with as little as 2.4 volts battery power from each battery.

### **SPECIFICATIONS**

BATTERIES: Transmitter 12V (A23) Battery

FCC ID No.'s: transmitter - K9LSP1001

Operating Frequency: 303.8 MHZ

Canadian IC ID No.'s: transmitter – 2439-102-728

#### **FCC REQUIREMENTS**

**NOTE: THE MANUFACTURER IS NOT RESPONSIBLE FOR ANY RADIO OR TV INTERFERENCE CAUSED BY UNAUTHORIZED MODIFICATIONS TO THIS EQUIPMENT. SUCH MODIFICATIONS COULD VOID THE USER'S AUTHORITY TO OPERATE THE EQUIPMENT.**

### **FOR TECHNICAL SERVICE, CALL:**

#### **U. S. INQUIRIES**

(855) 498-8324 or (260) 459-1703

#### **CANADIAN INQUIRIES**

(877) 472-3923

**FOR SALES: (888) 672-8929**

**WEBSITE: skytechpg.com**

**MANUFACTURED EXCLUSIVELY FOR SKYTECH II, INC.**